



# Offsite Manufacture & Assembly



## About Te-Tech Process Solutions

Te-Tech Process Solutions is a provider of advanced process technologies and conventional products for industrial, municipal and commercial water and wastewater treatment. Our products cater for a range of client needs from standardised products to engineered solutions designed to meet the exacting needs of the client's process.

Te-Tech's in house capability includes process, mechanical and electrical design, off-site manufacture and assembly, MCC and Control Panel Manufacture

and System Integration. Our extended services include digital engineering, service and maintenance, operational support and real time control.

Our organisation is founded upon 4 key areas of expertise:

- Water and Wastewater Treatment
- Automation Control and Technology
- Digital Engineering
- Offsite Manufacturing and Assembly

Advanced technology and innovation are at the core of our business enabling us to provide high quality, efficient solutions to our clients.

# Offsite Manufacture & Assembly

Te-Tech's offsite manufacture and assembly capability provides standard products and engineered solutions to the water and wastewater sector, oil and gas and energy industries. Its primary focus is in solutions which are designed for manufacture and assembly DfMA; reducing on site construction time, reducing carbon footprint and minimising risk.

At our Southampton based headquarters we have over 1000 sq. metres of internal manufacturing space as well as external areas for assembly and storage of larger materials and manufactured components. We design, manufacture and assemble to a range of different standards including CE / CA marking, EXC2 Structural Steel, BS and ASME welding procedures.

Our strength within Te-Tech Process Solutions culminates in our integrated service offering the complete process solution package, from digital design, automation and control through to offsite manufacture and on site assembly.



## Some of our standard products that we manufacture:



### te-saf™

- Pre assembled packaged plant
- Unit sizes up to 1150 PE
- Modular units can be connected to increased treatment capacity
- Quick to install
- Easy removal of manifolds
- Removable caged media



### te-sewpas™

- Self-contained airlift unit for sludge removal
- Low Totox solution
- Suitable for primary, secondary and humus tanks
- Simple to operate
- Available as 1-4 way unit
- Easily integrates into existing control systems



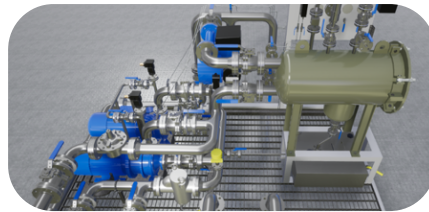
### te-uv™

- Complete UV disinfection package in containerised unit, with optional SR security ratings
- Easy and quick to install
- Large range in treatment capacity from 1m<sup>3</sup>/hr to 500m<sup>3</sup>/hr
- WIMES, WRAS and DWI Reg 31 compliant



### te-cyc™

- Advanced cyclic AS process
- Standard modular units
- Small to medium size plants
- Complete off-site assembly
- Small footprint
- Single stage treatment
- High quality effluent



## Fuel Transfer Systems

- Remote and temporary applications
- Containerised solution
- ATEX zone 1 pump room
- ATEX zone 2 laboratory
- Easily deployable
- Range from 100l/m to 2400l/m
- Removable pump skid
- Duty / standby configuration



## Engineered Solutions

- Bespoke access and storage fabrication
- Suitable for preassembly and transport or for assembly on site
- Skid mounted process solutions for pumping and material handling
- Interfaces with Digital Design, Virtual and Augmented Reality for complex or remote solutions



Compact



Cost Effective



DfMA



Resilient



Innovative



Sustainable



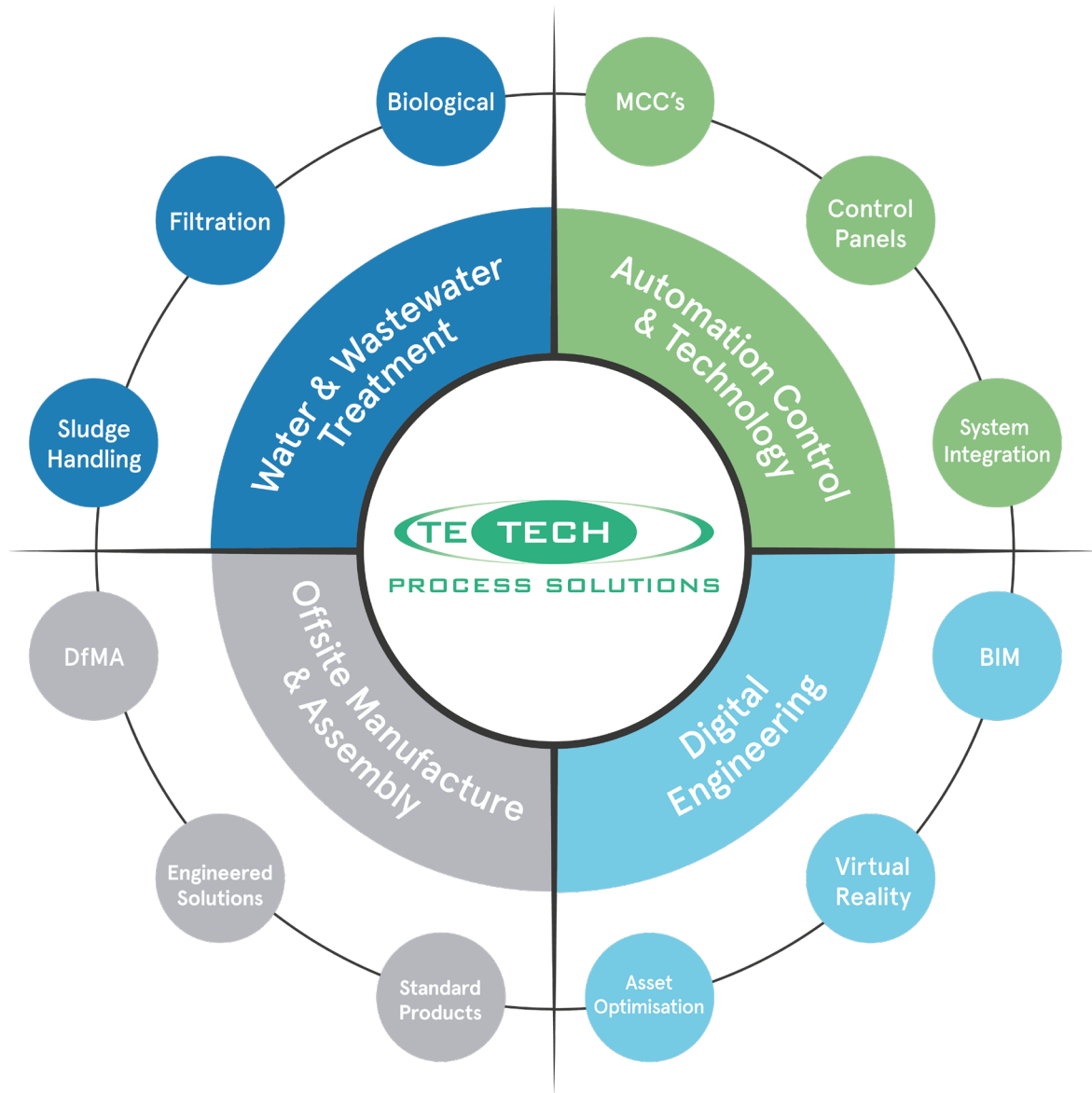
Flexible

**WATER &  
WASTEWATER  
TREATMENT**

**AUTOMATION  
CONTROL &  
TECHNOLOGY**

**DIGITAL  
ENGINEERING**

**OFFSITE  
MANUFACTURE  
& ASSEMBLY**



## Contact Us



### Ashton Dewey

*Chief Operating Officer*

[ashton.dewey@te-tech.co.uk](mailto:ashton.dewey@te-tech.co.uk)

**T:** +44 (0) 23 8235 1600

### Mike Froom

*Business Development Director*

[mike.froom@te-tech.co.uk](mailto:mike.froom@te-tech.co.uk)

**T:** +44 (0) 23 8235 1600

2 Contech House  
Unit 2 Chapel Lane  
Rushington Business Park,  
Southampton, SO40 9AH

**T:** +44 (0) 23 8235 1600

**E:** [enquiries@te-tech.co.uk](mailto:enquiries@te-tech.co.uk)

**[www.te-tech.co.uk](http://www.te-tech.co.uk)**