A detailed white wireframe line drawing of an industrial facility, likely a refinery or chemical plant, is overlaid on a dark blue background. The drawing shows several large cylindrical storage tanks, a complex network of pipes and valves, and a set of stairs leading up to a platform. The tanks and pipes are labeled with the "TE TECH PROCESS SOLUTIONS" logo. The overall style is technical and precise.

# Digital Engineering

## About Te-Tech Process Solutions

**Te-Tech Process Solutions is a provider of advanced process technologies and conventional products for industrial, municipal and commercial water and wastewater treatment. Our products cater for a range of client needs from standardised products to engineered solutions designed to meet the exacting needs of the client's process.**

Te-Tech's in-house capability includes process, mechanical and electrical design, off-site manufacture and assembly, MCC and Control Panel Manufacture

and System Integration. Our extended services include digital engineering, service and maintenance, operational support and real time control.

Our organisation is founded upon 4 key areas of expertise:

- Water and Wastewater Treatment
- Automation Control and Technology
- Digital Engineering
- Offsite Manufacturing and Assembly

Advanced technology and innovation are at the core of our business enabling us to provide high quality, efficient solutions to our clients.

## Digital Engineering

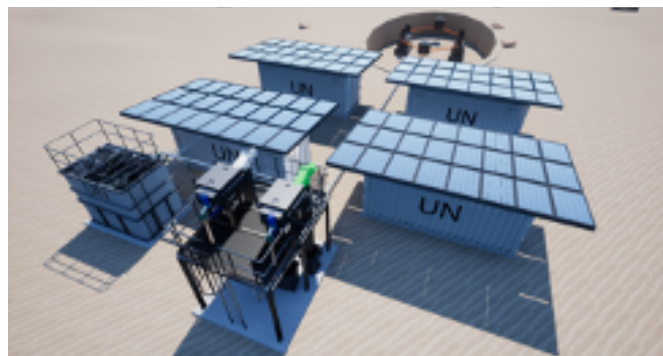
**Te-Tech utilise cutting edge digital technologies to provide innovative solutions to our client's problems. Our digital engineering services support the whole life cycle of our clients' assets from conceptual design, through design for manufacture and assembly (DfMA), installation on site, final commissioning, operation and maintenance and decommissioning at the end of the asset's life.**

Our in-house software capability provides clients with the visualisation tools to precisely view and interrogate designs in a virtual world to minimise clashes, delays or abortive activities and to ensure that the delivered assets are acceptable to operators in the real world.

Our BIM capability ensures our products and technologies create assets that are fit for the future and our virtual reality technology allows our teams and clients to fully immerse themselves in the design, optimisation and operation of our solution prior to manufacturing.

Our asset optimisation capability helps clients get the best performance out of their assets, by integrating real time control and using data driven insight we can ensure the sustainability and efficiency of asset performance across its lifecycle.

Our virtual environment shows the equipment in operation, with liquids moving and plant turning on/off according to the actual system control philosophy. This is an invaluable tool for HAZOPS, ALM and remote training of operators before the plant is constructed – reducing risk and time on site.





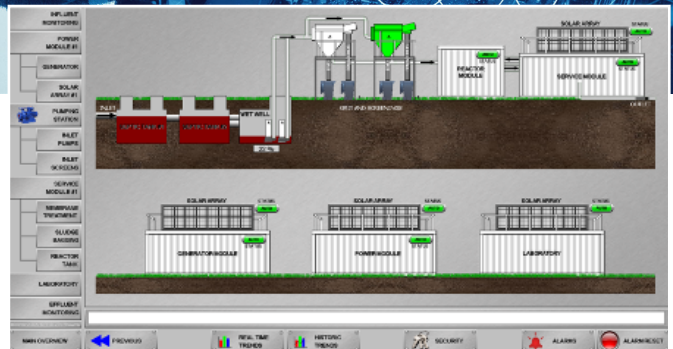


## BIM

Building Information Modelling (BIM) has redefined what Te-Tech are now capable of delivering. From the design and collaboration tools used to the new standards adhered to, Te-Tech are constantly evolving and finding new improved ways of delivering digital project information to our clients.

This commitment from the Board of Directors and the Chairman is demonstrated through the significant investment in BIM technology, capabilities and training.

Te-Tech recognise the advantages BIM can bring to any project and we are consistently delivering benefits to our clients and design and construction partners.



## Virtual Reality

Our in-house software capability provides clients with the visualisation tools to precisely view and interrogate designs in a virtual world.

- Virtual model development of package and modular plant
- Access, Lifting & Maintenance (ALM) simulation and clash detection
- Real time simulation through SCADA and PLC integration
- Augmented layering capabilities
- Interactive audio-visual headset

## Asset Optimisation

Our asset optimisation capability helps clients get the best performance out of their assets, by providing an operational intelligence platform to support real time control and remote decision making to help reduce operational cost, enhance reliability and maintain discharge consent obligations.

- Development of bespoke and proprietary Real Time Control Solutions
- Predictive Maintenance Technology for asset intensive industries
- Intelligent, in situ process technology upgrades to improve performance and reliability.

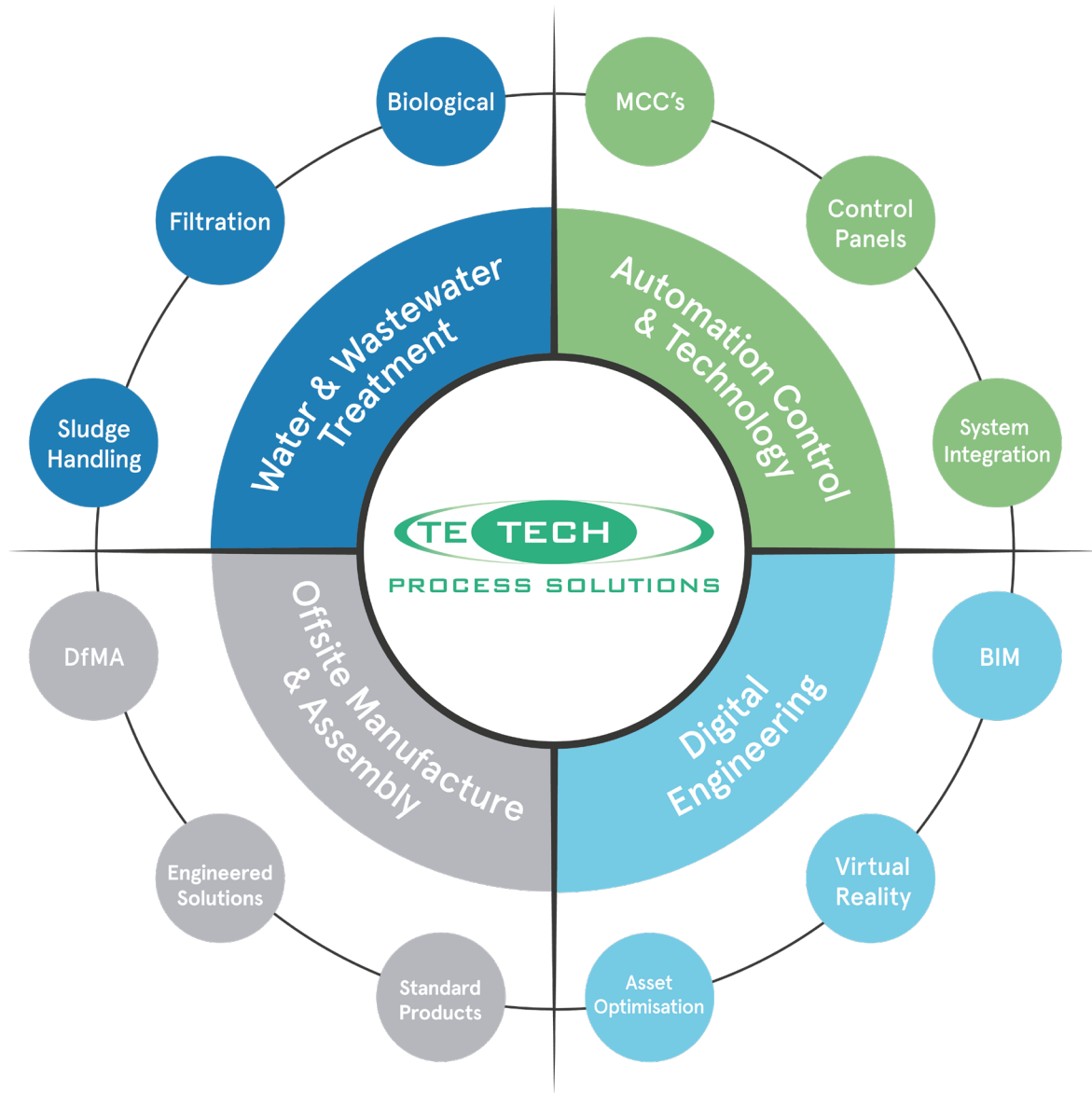


**WATER &  
WASTEWATER  
TREATMENT**

**AUTOMATION  
CONTROL &  
TECHNOLOGY**

**DIGITAL  
ENGINEERING**

**OFFSITE  
MANUFACTURE  
& ASSEMBLY**



## Contact Us



### Ashton Dewey

*Chief Operating Officer*

[ashton.dewey@te-tech.co.uk](mailto:ashton.dewey@te-tech.co.uk)

**T:** +44 (0) 23 8235 1600

### Mike Froom

*Business Development Director*

[mike.froom@te-tech.co.uk](mailto:mike.froom@te-tech.co.uk)

**T:** +44 (0) 23 8235 1600

2 Contech House  
Unit 2 Chapel Lane  
Rushington Business Park,  
Southampton, SO40 9AH

**T:** +44 (0) 23 8235 1600

**E:** [enquiries@te-tech.co.uk](mailto:enquiries@te-tech.co.uk)

**[www.te-tech.co.uk](http://www.te-tech.co.uk)**